

Courtyard House 03



Courtyard House 03

Two boxes arranged on a single level with a mono-pitched roof enable a quick and straightforward assembly of the courtyard house. The house can be configured as a standalone unit, but is most effective when arranged as terraced housing.

Each dwelling can “borrow” from the neighbouring box modules, allowing for homes in varying sizes.

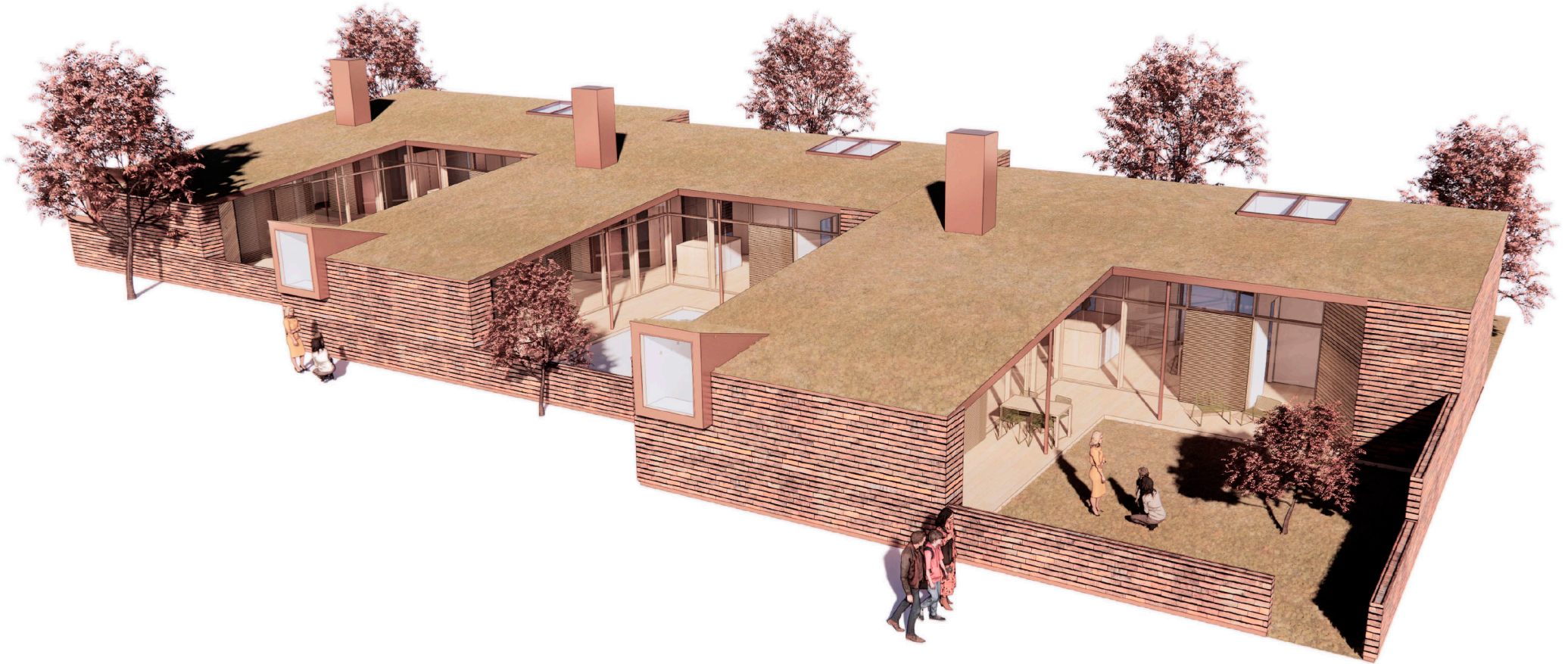
The courtyard house offers small outdoor spaces on both sides – at the entrance and adjacent to the kitchen and dining area.

The dining space receives daylight from the more private courtyard, which ties together all rooms and shared spaces of the home.

Sustainable timber modules – minimum DGNB Gold.

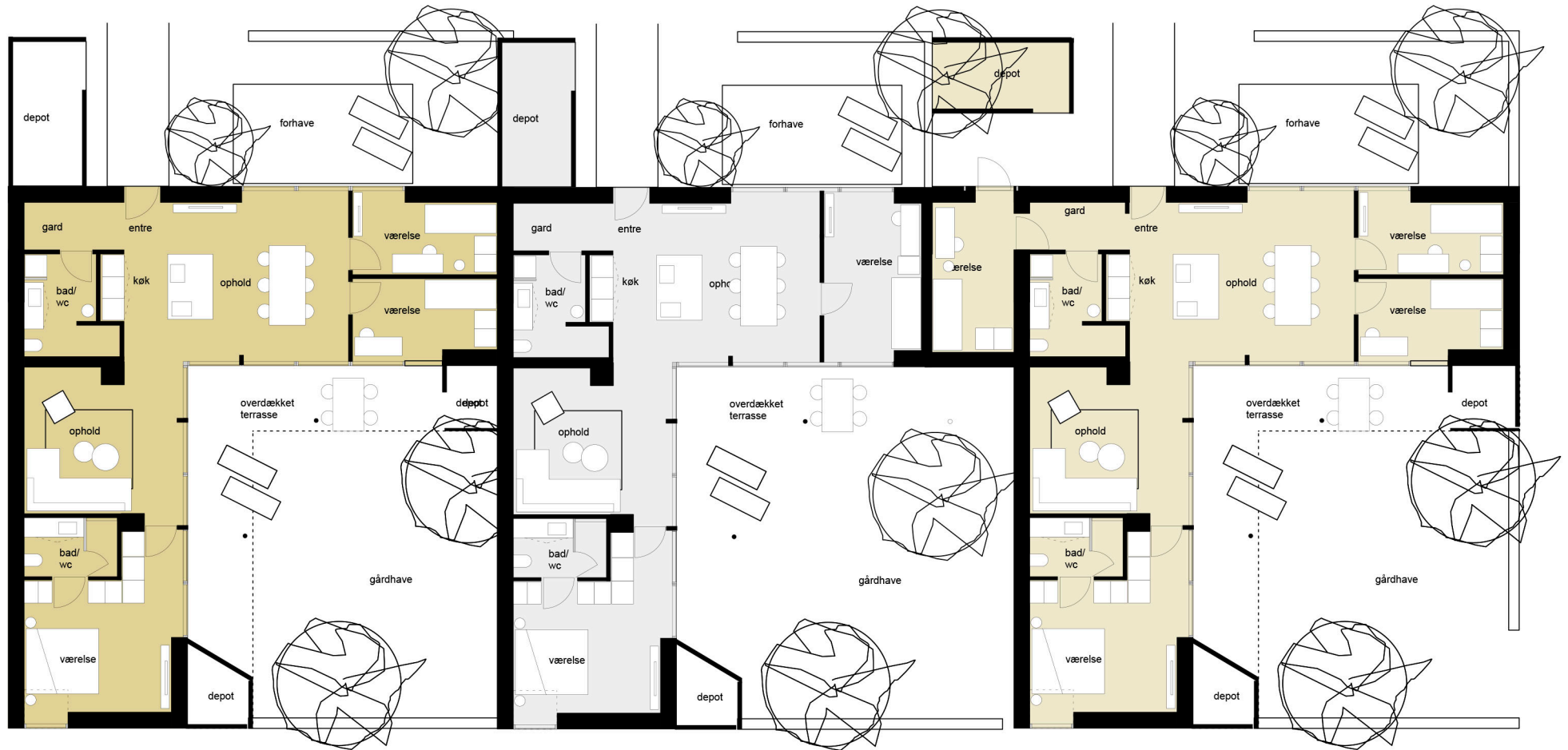


Courtyard House 03



The courtyard house shown with staggered volumes, still allowing for varying dwelling sizes

Courtyard House 03



Dwelling 01 117 m²

Dwelling 03 106 m² 3V

Dwelling 02 128 m² 5V

4V Variations